

# LYMPHANGIOMA OF THE OVARY

**Achour Radhouane**

*Emergency Department of maternity and Neonatology Center of Tunis , Faculty of Medicine of Tunis, Tunisia El Manar University, Tunisia*

**Introduction:** Lymphangiomas are rare tumors of lymphatic system comprised of multiple cystic spaces lined by endothelium which stains positively with CD-31 and CD-34 on immunostaining [1]. They are generally benign tumors. They contain serous chylous fluid [2]. Clinical manifestations vary from asymptomatic mass to acute abdominal pain. Frequently, diagnosis becomes difficult because it can be confused with a malignant ovarian mass.

**Case Report:** A 36-year-old woman presented to the Gynaecology Department for infertility problem of 2 years. There was no significant disease. Her present routine hematological and biochemical profiles were within normal range. Abdominal palpation revealed a lower abdominal pain. Routine Vaginal ultrasound examination revealed a normal sized uterus. The right ovary was noted to be enlarged and had a cluster grapes aspect with anechoic content (Fig. 1). HCG was negative rate and the serum CA 125 concentration was normal range. The exact cause of the right ovarian enlargement could not be ascertained. Therefore, it was decided to proceed to Exploratory laparoscopy. Exploration revealed an enlarged right ovary with gray and white multiple lobulated mass containing multiple cystic areas filled with milky fluid. excrescences or implantation on the peritoneum .The uterus was normal in size and a small amount of chylous milky ascites observed in pelvis (Figs. 2). Peritoneal fluid was obtained for cytological analysis; multiple ovarian and peritoneal biopsies were performed.

**Conclusion:** Early ultrasound evaluation during the first trimester is recommended for patients who are at risk of invasive placentation. Based on this case, we found that early diagnosis of placenta accreta in the first trimester is possible.

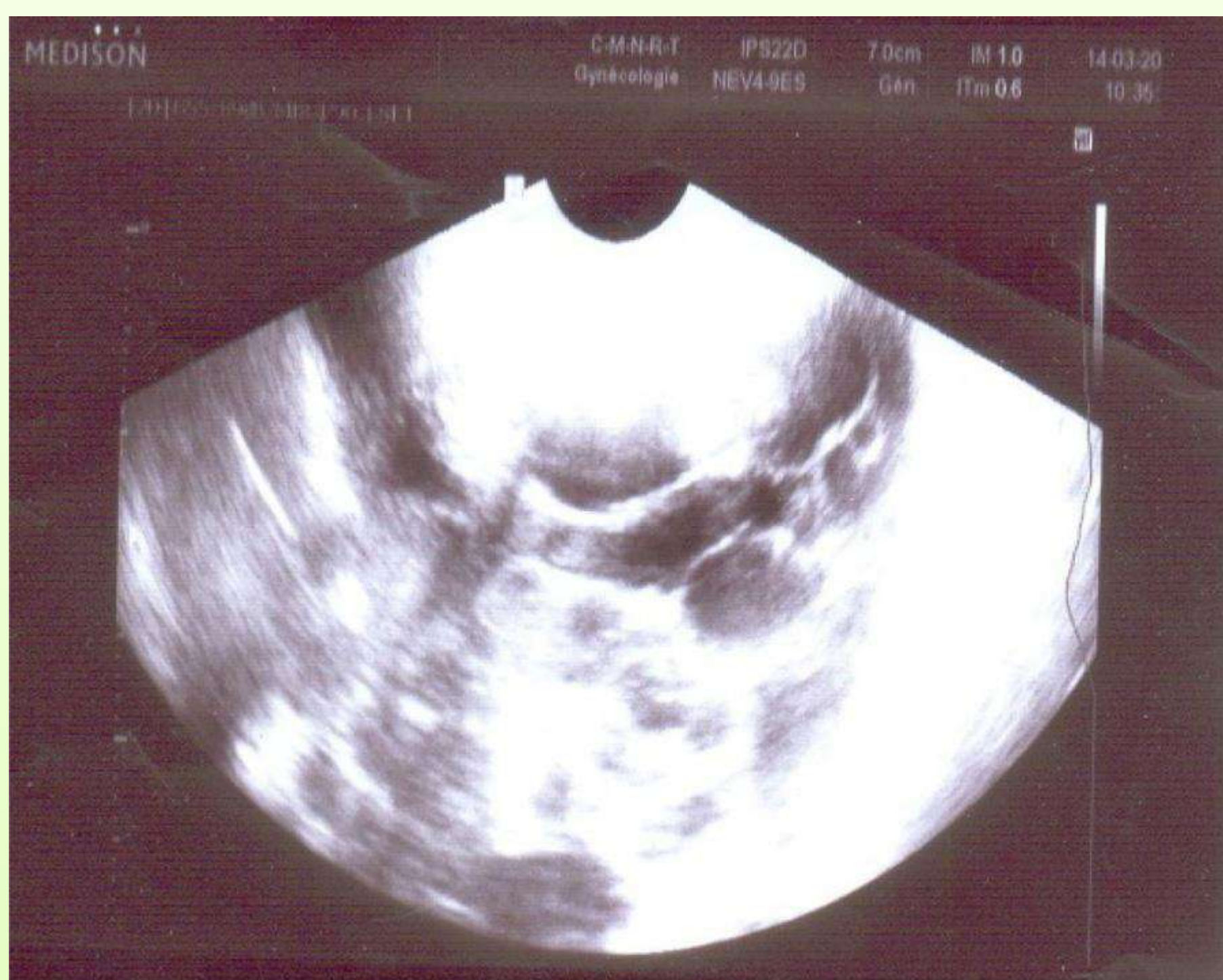


Fig. 1. The right ovary was noted to be enlarged and had a cluster grapes aspect with anechoic content.



Figs. 2. Right ovary with gray and white multiple lobulated mass

## References

- [1] Kafeel G, Telisinghe PU, Oo H. Lymphangioma of the ovary. Brunei Int Med J 2010;6(3):145–8.
- [2] Alqahtani A, Nguyen LT, Flageole H, Shaw K, Laberge JM. 25 years' experience with lymphangiomas in children. J Pediatr Surg 1999;34:1164–8.